

**KNEER · SÜD**  
**FENSTER**

Lived Vision

ENTRANCE DOORS  
**PRIME** MODELS

2024

ALUMINIUM

# PRIME MODELS 2024

## Sophisticated front doors

The decisive factor for your well-considered purchase decision is certainly the appearance. The spark must jump over. Whether modern, classic, purist or charming - the front door must suit you and the style of your house. Aluminium front doors from KNEER-SÜDFENSTER are not only beautiful to look at and inviting, but also convince through inner values such as a robust construction, high security and good thermal insulation.

An innovative, technically mature front door fulfills its tasks for many years and looks very good at the same time!

ENTRANCE DOORS  
CATEGORY **PREMIUM<sup>+</sup>**

FROM PAGE 6

ENTRANCE DOORS  
CATEGORY **PREMIUM**

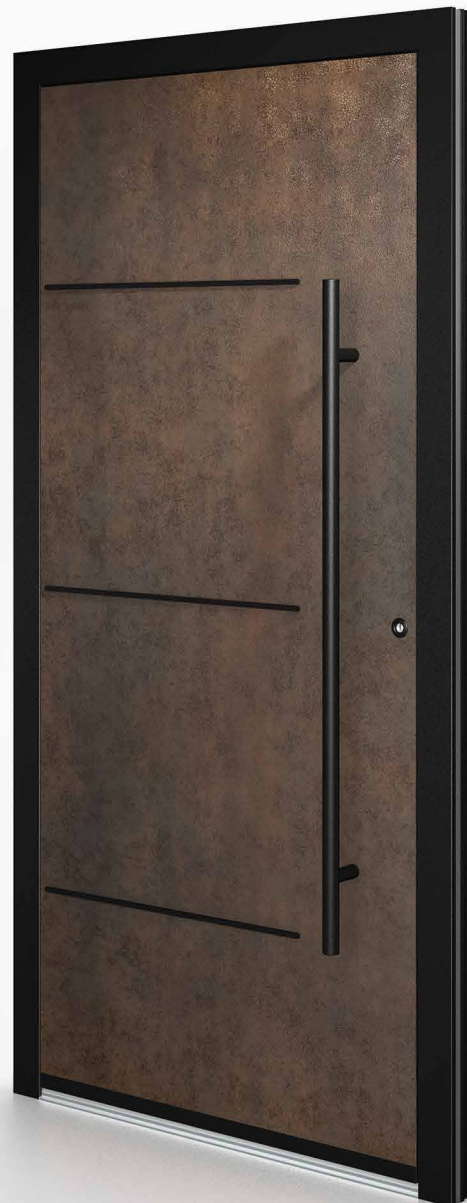
FROM PAGE 14

ENTRANCE DOORS  
CATEGORY **BASIC<sup>+</sup>**

FROM PAGE 20

ENTRANCE DOORS  
CATEGORY **BASIC**

PAGE 29



# Welcome to Kneer-Südfenster

For 90 years the family business KNEER-SÜDFENSTER has been producing high-quality building elements for demanding clients from aluminum-wood, wood, aluminum, aluminum-plastic and plastic.

Around 800 employees manufacture windows, lift-and-slide doors, mullion-transom facades and entrance doors according to the latest findings in the highest quality for customers all over the world.



MODEL OVERVIEW	4
ENTRANCE DOORS MODELS	6
ALUMINIUM COLOURS PG1	30
GLAZING	31
STAINLESS STEEL EQUIPMENT	32
BLACK EQUIPMENT	33
SPECIAL EQUIPMENT	34
FINGERPRINT	35
SASH EXECUTIONS	36
SAFETY TECHNOLOGY	38
TECHNICAL DATA	40
ALSO AVAILABLE	44

# MODEL OVERVIEW



HTA 24-215  
> page 6



HTA 24-220  
> page 8



HTA 24-225  
> page 10



HTA 24-226  
> page 12



HTA 24-206  
> page 16



HTA 24-213  
> page 18



HTA 24-229  
> page 18



HTA 24-701  
> page 20



HTA 24-702  
> page 20



HTA 24-703  
> page 20



HTA 24-122  
> page 24



HTA 24-124  
> page 24



HTA 24-113  
> page 24



HTA 24-125  
> page 24



HTA 24-105  
> page 26



HTA 24-120  
> page 28



HTA 24-126  
> page 28



HTA 24-127  
> page 29



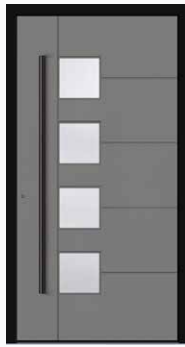
HTA 24-128  
> page 29



HTA 24-129  
> page 29



HTA 24-208  
> page 16



HTA 24-218  
> page 16



HTA 24-228  
> page 16



HTA 24-201  
> page 18



HTA 24-203  
> page 18



HTA 24-705  
> page 20



HTA 24-706  
> page 22



HTA 24-707  
> page 22



HTA 24-709  
> page 22



HTA 24-710  
> page 22



HTA 24-106  
> page 26



HTA 24-107  
> page 26



HTA 24-108  
> page 26



HTA 24-115  
> page 28



HTA 24-119  
> page 28



HTA 24-132  
> page 29



RC 2  
standard



## HT A 24-215

standard equipment  
colour HWF-RAL7037-FMA dusty grey  
rosette "ring" BA 3503

### HARMONIUS LOOK

Elegance redefined. This entrance door is a simple beauty.  
Reduced to the essentials, with subtle details that shine in the light.  
Discover true luxury in your entrance area.

#### Standard equipment

automatic-lock with daytime function | roller hinges, jet black | entrance door in RAL-colour according to colour chart PG 1 and PG 2  
internal grip plate | LED-handle illumination | rosette "ring" freely selectable





RC 2  
standard



## HT A 24-220

standard equipment  
frame colour HWF-RAL9005-FMA  
jet black  
door leaf colour HWF-RAL9006-FME  
white aluminium  
rosette "ring" BA 3505

### TIMELESS ELEGANT

Behind the charming exterior hides the latest technology and innovative security equipment of resistance class RC 2. A modern entrance door means more protection, security and well-being.

#### Standard equipment

automatic-lock with daytime function | roller hinges, jet black | entrance door in RAL-colour according to colour chart PG 1 and PG 2  
handle aluminium in powdercoated RAL 9005 jet black fine structure matt | LED-handle illumination | rosette "ring" freely selectable

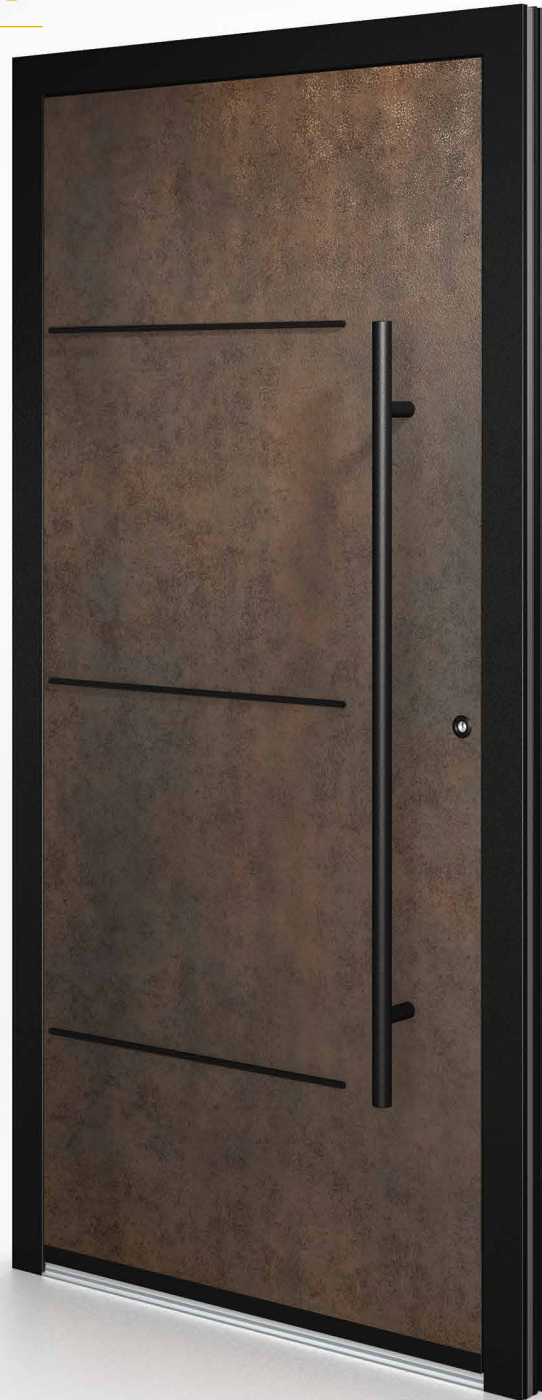
⚠ Only available with illustrated handle in jet black or silver







RC 2  
standard



## HT A 24-225

standard equipment  
frame colour HWF-RAL9005-FMA  
jet black  
door leaf rust optics ceramics Corten

*Pilaster stripes & ceramics Corten surface are only possible on the outside.*

### ROBUST, SCRATCH RESISTANT AND UNCOMPLICATED

Even it's a rather old material ceramics is nowadays a versatile high-tech material - extremely robust. The model ceramics Corten remembers to a rust steel plate tanned by wind and weather, scratch resistant and uncomplicated.

#### Standard equipment

automatic-lock with daytime function | roller hinges, jet black | frame colour HWF-RAL9005-FMA jet black  
door leaf outside rust optics ceramics Corten | door leaf inside HWF-RAL9005-FMA jet black | handle round jet black 1200 mm  
rosette "ring" BA 3505 | base plate, jet black | pilaster stripes, jet black

HT A 24-225 frame colour HWF-RAL9005-FMA jet black  
door leaf rust optics ceramics Corten | handle round jet black 1200  
mm ring rosette BA 3505 | jet black base plate | jet black pilaster stripes  
side light glazing satinato white





RC 2  
standard



## HT A 24-226

standard equipment  
frame colour HWF-RAL9005-FMA  
jet black  
door leaf concrete-look

*The concrete-look is only possible on the outside.*

### THE AESTHETIC LIES IN THE RESTRAINT

Rough surface embossed with pores: the concrete-appearance is timeless and elegant. A unique entrance door with unmistakable appearance for discerning builders with a faible for the special.

#### *Standard equipment*

*automatic-lock with daytime function | roller hinges, jet black | frame colour HWF-RAL9005-FMA jet black  
door leaf outside concrete-look | door leaf inside HWF-RAL9005-FMA jet black | handle half-round jet black 1000 mm  
rosette "ring" BA 3505 | base plate, jet black*



HT A 24-226 frame colour HWF-RAL9005-FMA  
jet black | door leaf outside concrete-look | handle half-  
round jet black 1000 mm | rosette "ring" BA 3505

# PREMIUM

## YOUR ENTRANCE DOOR, YOUR STYLE

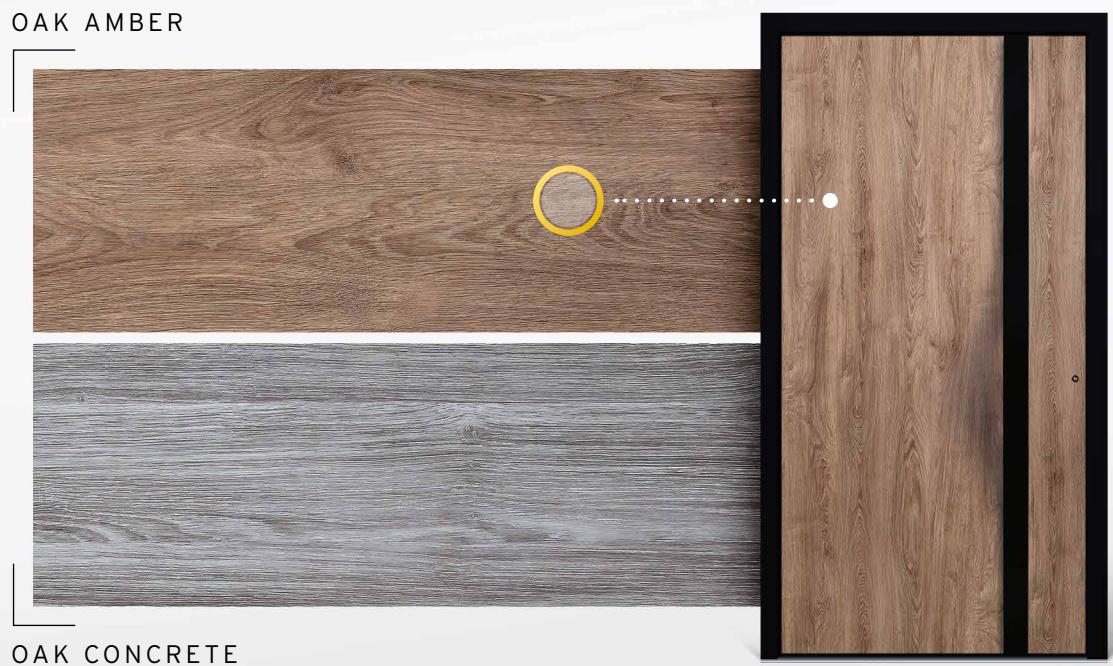
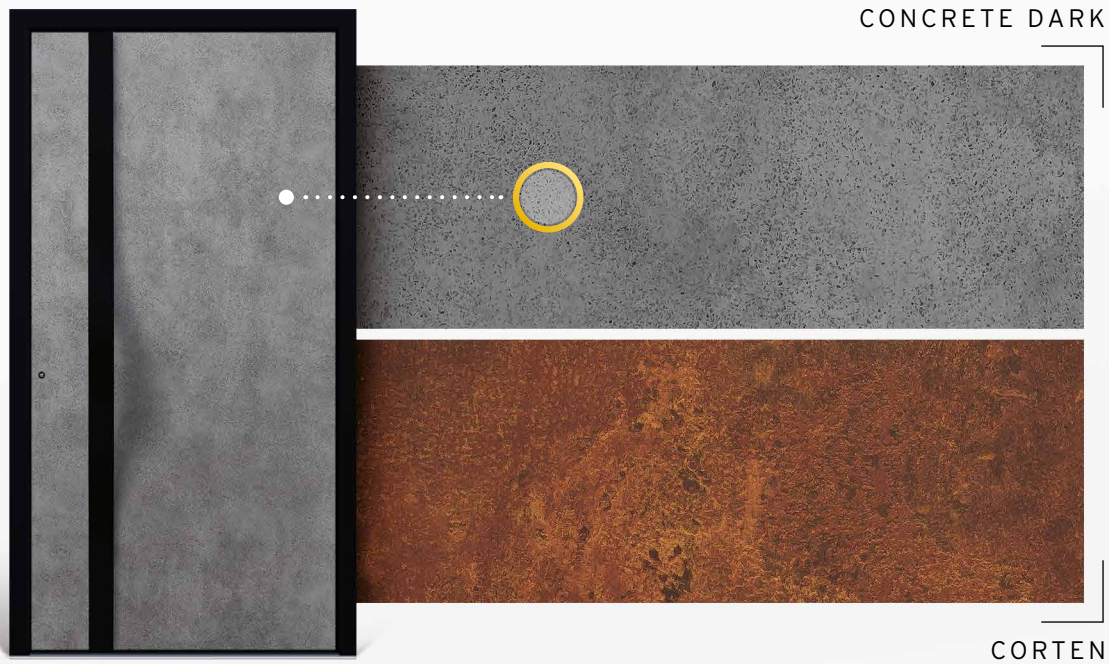
Give your entrance a touch of character with our new design surfaces.

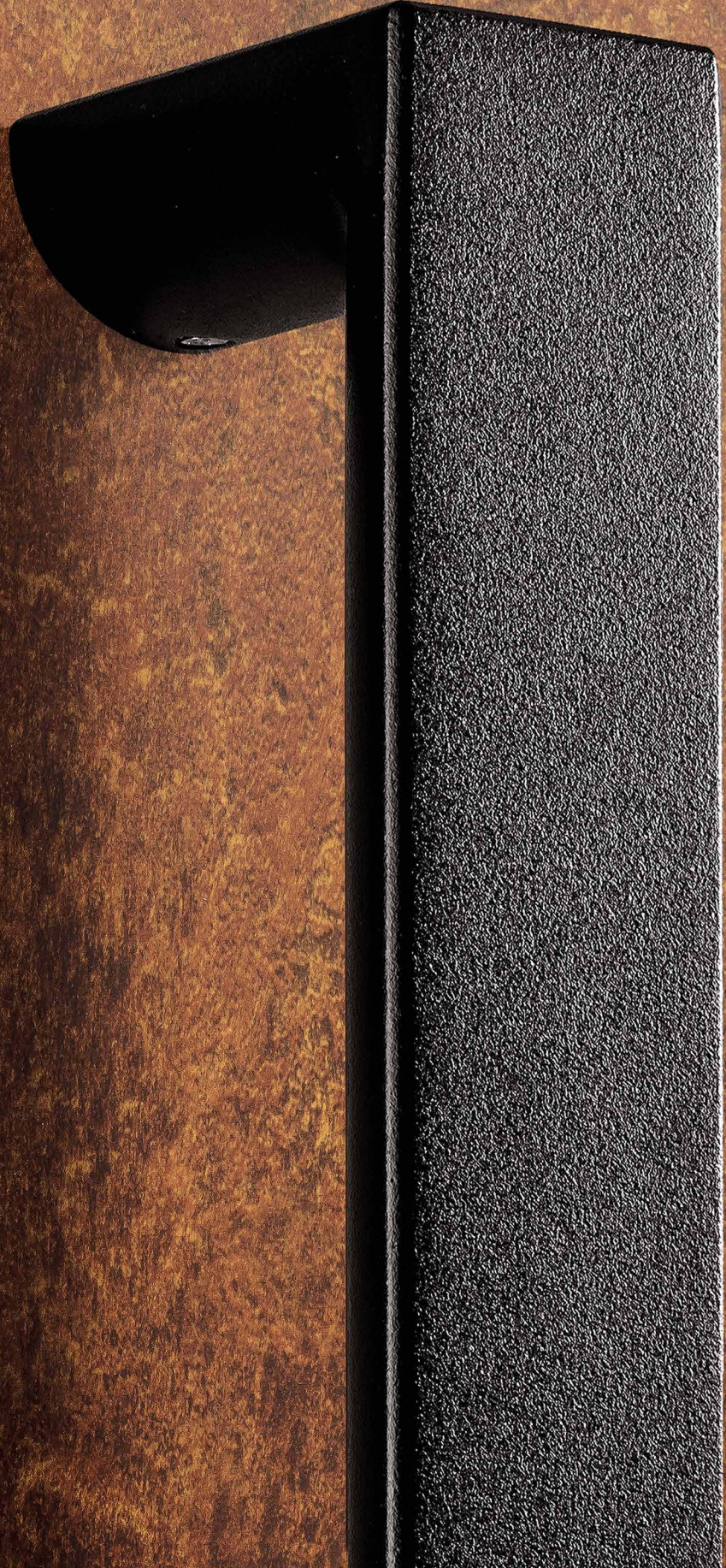
The combination of black with natural wooden decors creates an inviting cosiness, while modern rust or concrete looks give your entrance door an industrial charm.

These entrance doors can be customised with the following design surfaces:

HT A 24-201 | HT A 24-203 | HT A 24-206 | HT A 24-208 | HT A 24-213 | HT A 24-228 | HT A 24-229

You can also choose from our standard colours (aluminium colours PG 1 and PG 2).





# PREMIUM

EQUIPMENT ALSO AVAILABLE  
IN STAINLESS STEEL



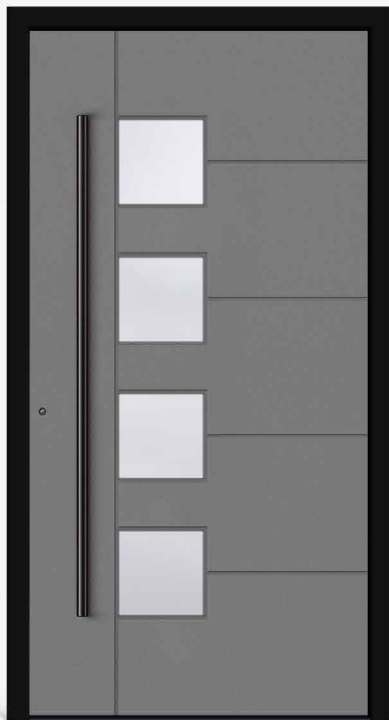
**HT A 24-206**

frame colour HWF-RAL9005-FMA jet black  
door leaf colour HWF-RAL9007-FME grey aluminium  
glazing satinato white | handle BA 3016  
rosette "ring" BA 3505 | jet black pilaster stripes



**HT A 24-208**

frame colour HWF-RAL9005-FMA jet black  
door leaf surface oak-concrete | glazing satinato  
white | handle BA 3013 | rosette "ring" BA 3505  
jet black pilaster stripes



**HT A 24-218\***

frame colour HWF-RAL9005-FMA jet black  
door leaf colour HWF-RAL9007-FME grey aluminium  
glazing satinato white | handle BA 3016  
rosette "ring" BA 3505 | grooves



**HT A 24-228**

frame colour HWF-RAL9005-FMA jet black  
door leaf surface oak-concrete | glazing satinato  
white | handle BA 3015 | rosette "ring" BA 3505  
jet black pilaster stripes





# PREMIUM

EQUIPMENT AVAILABLE IN  
JET BLACK OR STAINLESS STEEL



**HT A 24-201**

colour HWF-RAL9016-FMA traffic white  
handle BA 3001 | rosette "ring" BA 3503  
stainless steel base plate



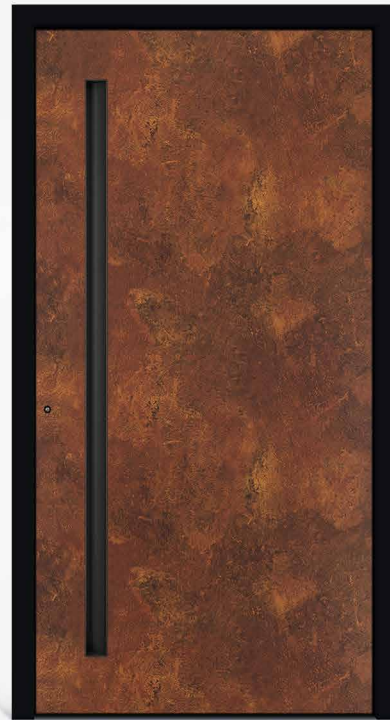
**HT A 24-203**

colour HWF-RAL9016-FMA traffic white  
handle BA 3001 | rosette "ring" BA 3503  
stainless steel pilaster stripes



**HT A 24-213**

frame colour HWF-RAL9005-FMA jet black  
door leaf surface Corten | curved handle  
aluminium in powdercoated RAL 9005 jet black  
fine structure matt\* | rosette "ring" BA 3505



**HT A 24-229**

frame colour HWF-RAL9005-FMA jet black  
door leaf surface Corten | internal grip plate |  
rosette "ring" BA 3505  
LED lighting optional



# BASIC<sup>+</sup>

ALL MODELS  
ONLY WITH THE SHOWN  
HANDLES AVAILABLE



**HT A 24-701**

colour HWF-RAL9016-FMA traffic white  
glazing satinato white | handle BA 3047, 1600 mm  
rosette "ring" BA 3503



**HT A 24-702**

colour HWF-RAL9016-FMA traffic white  
glazing satinato white | handle BA 3047, 1600 mm  
rosette "ring" BA 3503



**HT A 24-703**

colour HWF-RAL7037-FMA dusty grey  
glazing satinato white | handle BA 3047, 1600 mm  
rosette "ring" BA 3503



**HT A 24-705**

colour HWF-RAL7037-FMA dusty grey  
glazing satinato white | handle BA 3047, 1600 mm  
rosette "ring" BA 3503



HT A 24-701 colour HWF-RAL9016-FMA traffic white  
glazing Iso light | handle BA 3047, 1600 mm

# BASIC<sup>+</sup>

ALL MODELS  
ONLY WITH THE SHOWN  
HANDLES AVAILABLE



**HT A 24-706**

colour HWF-RAL9016-FMA traffic white  
glazing satinato white | handle BA 3047, 1600 mm  
rosette "ring" BA 3503



**HT A 24-707**

colour HWF-RAL9016-FMA traffic white  
handle BA 3047, 1600 mm | rosette "ring" BA 3503



**HT A 24-709**

colour HWF-RAL7037-FMA dusty grey  
handle BA 3047, 1600 mm | rosette "ring" BA 3503  
stainless steel pilaster stripes



**HT A 24-710**

colour HWF-RAL7037-FMA dusty grey  
glazing satinato white | handle BA 3047, 1600 mm  
rosette "ring" BA 3503



HT A 24-706 colour HWF-RAL9007-FME grey aluminium  
glazing Iso light | handle BA 3047, 1600 mm

# BASIC<sup>+</sup>

ALL MODELS  
ONLY WITH THE SHOWN  
HANDLES AVAILABLE



**HT A 24-122**

colour HWF-RAL9016-FMA traffic white  
glazing satinato white | handle BA 3080, 600 mm  
rosette "oval" BA 3504 | inside: below without  
cassettes and ornamental frame



**HT A 24-124**

colour HWF-RAL9016-FMA traffic white  
glazing satinato white | handle BA 3080, 600 mm  
rosette "oval" BA 3504 | inside: without cassettes  
and ornamental frame | divided lites (both sides)



**HT A 24-113**

colour HWF-RAL7016-FMA anthracite grey  
glazing satinato white | handle BA 3080, 600 mm  
rosette "oval" BA 3504 | inside: below without  
cassette and ornamental frame | glazing bars  
between the exterior panes



**HT A 24-125**

colour HWF-RAL7016-FMA anthracite grey  
glazing satinato white | handle BA 3080, 600 mm  
rosette "oval" BA 3504 | decorative rosette only  
outside





HT A 24-113 colour HWF-RAL9016-FMA traffic white  
glazing Iso light | glazing bars between the exterior panes

# BASIC<sup>+</sup>

ALL MODELS  
ONLY WITH THE SHOWN  
HANDLES AVAILABLE



**HT A 24-105**

colour HWF-RAL9016-FMA traffic white  
glazing satinato white | handle BA 3047, 1600 mm  
rosette "oval" BA 3504



**HT A 24-106**

colour HWF-RAL9016-FMA traffic white  
glazing satinato white | handle BA 3047, 1600 mm  
rosette "oval" BA 3504



**HT A 24-107**

colour HWF-RAL7016-FMA anthracite grey  
glazing satinato white | handle BA 3047, 1600 mm  
rosette "oval" BA 3504



**HT A 24-108**

colour HWF-RAL7016-FMA anthracite grey  
glazing satinato white | handle BA 3047, 1600 mm  
rosette "oval" BA 3504



HT A 24-106 colour HWF-RAL7016-FMA anthracite grey  
glazing satinato white | handle BA 3047, 1600 mm

# BASIC<sup>+</sup>

ALL MODELS  
ONLY WITH THE SHOWN  
HANDLES AVAILABLE



**HT A 24-115**

colour HWF-RAL9016-FMA traffic white  
glazing satinato white | handle BA 3047, 1600 mm  
rosette "oval" BA 3504



**HT A 24-119**

colour HWF-RAL9016-FMA traffic white  
handle BA 3047, 1600 mm | rosette "oval" BA 3504  
stainless steel pilaster stripes



**HT A 24-120**

colour HWF-RAL7016-FMA anthracite grey  
glazing satinato white | handle BA 3047, 1600 mm  
rosette "oval" BA 3504



**HT A 24-126**

colour HWF-RAL7016-FMA anthracite grey  
handle BA 3047, 1600 mm | rosette „oval“ BA 3504

# BASIC

ALL MODELS  
ONLY WITH THE SHOWN  
HANDLES AVAILABLE



**HT A 24-127**

colour HWF-RAL9016-FMA traffic white  
glazing satinato white | handle BA 3071, 1000 mm  
rosette "oval" BA 3504



**HT A 24-128**

colour HWF-RAL9016-FMA traffic white  
glazing satinato white | handle BA 3071, 1000 mm  
rosette "oval" BA 3504



**HT A 24-129**

colour HWF-RAL7016-FMA anthracite grey  
glazing satinato white | handle BA 3071, 1000 mm  
rosette "oval" BA 3504



**HT A 24-132**

colour HWF-RAL7016-FMA anthracite grey  
glazing satinato white | handle BA 3071, 1000 mm  
rosette "oval" BA 3504

# ALUMINIUM COLOURS PG1



HWF-RAL9016-FMA  
traffic white



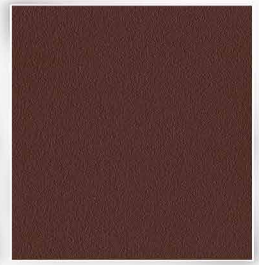
HWF-RAL7040-FMA  
window grey



HWF-RAL7037-FMA  
dusty grey



HWF-RAL7016-FMA  
anthracite grey



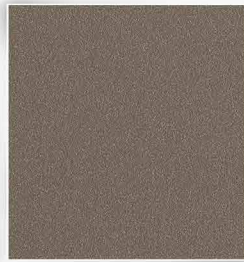
HWF-RAL8017-FMA  
chocolate brown



HWF-RAL9006-FME  
white aluminium



HWF-RAL9007-FME  
grey aluminium



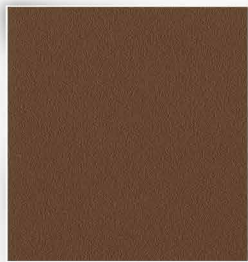
HWF-7774-FME  
volcanic ash



HWF-DB703-FME  
DB 703



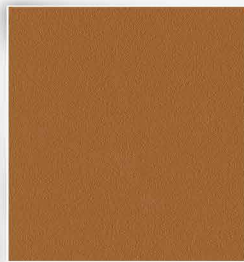
HWF-7773-FME  
cast iron



HWF-RAL8014-FMA  
sepia brown



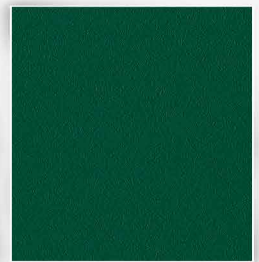
HWF-RAL8011-FMA  
nut brown



HWF-RAL8003-FMA  
clay brown



HWF-RAL3004-FMA  
purple red



HWF-RAL6005-FMA  
moss green



HWF-RAL9005-FMA  
jet black



HWF-6669-GMA  
alu nature



HWF-6668-GMA  
alu middle bronze



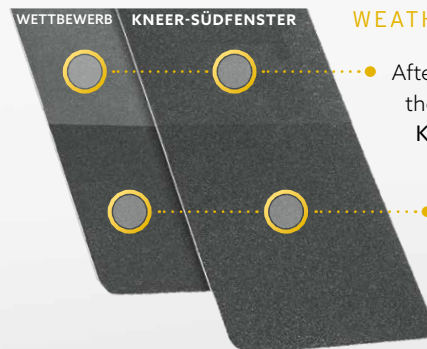
HWF-6667-GMA  
alu dark bronze

## ALUMINIUM SPECIAL COLOURS

1 PG 2 | see category **Also available**  
RAL colour at choice smooth-matt

2 PG 3 - 5 | see category **Also available**  
RAL colour at choice smooth-glossy, fine structure  
and highly weather resistant (HWF) as far as possible

**NOTE** The following colours are not available: NCS-, DB-  
and RAL design colour card, wood decors, pearl effect



## WEATHER TEST

● After 10 YEARS of weathering,  
the HWF-coating of  
**KNEER-SÜDFENSTER**  
is much less faded

● Powder coating in  
new condition

# GLAZING

To make your new front door even more individual, we offer special glasses for you to choose from. In addition to Iso light, we also offer various ornamental glass types. Or would you prefer Satinato white with a clear edge? Very elegant!



SATINATO WHITE\*



CHINCHILLA WHITE\*



MASTERCARRE WHITE\*



SATINATO WITH CLEAR EDGE



SILVIT WHITE



GOTHIK WHITE



MADRAS PAVE WHITE



MADRAS UADI WHITE



BAROCK WHITE

## NOTE

BASIC and BASIC+ entrance doors are only available with the marked\* glazing

# STAINLESS STEEL EQUIPMENT



## NOTE

For **PREMIUM** entrance doors you can choose between these handle bars



### HANDLE BAR HALF-ROUND

material: stainless steel  
dimension and type:

- 1480 mm - BA 3030
- 1280 mm - BA 3011
- 1040 mm - BA 3004

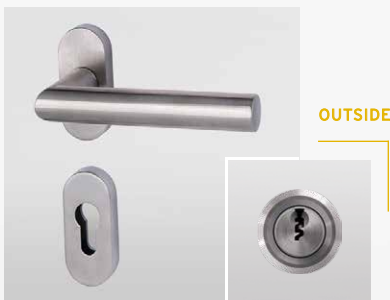
### HANDLE BAR ROUND

material: stainless steel  
dimension and type:

- 1480 mm - BA 3001
- 1200 mm - BA 3003
- 500 mm - BA 3010

## INTERIOR HANDLES & EXTERIOR ROSETTES

**PREMIUM**, **BASIC+** and **BASIC** front doors are standardly equipped with stainless steel fittings and interior handle BA 3503 and BA 3504. On request, a handle can be selected on the outside instead of the handle bar. The outside lever handle is identical with the inside lever handle (without surcharge). You will receive 5 keys in the standard.



### HALF SET FOR ATTACHMENT PANEL

cylinder cover: rosette "ring"  
handle inside: "oval"  
type: BA 3503



### HALF SET FOR INSERT PANEL

cylinder cover: rosette "oval"  
handle inside: "oval"  
type: BA 3504

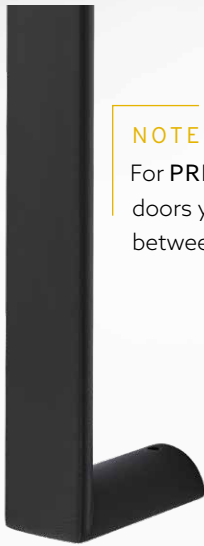


### PROFILE CYLINDER

with drilling protection  
and 5 reversible keys



# BLACK EQUIPMENT



**NOTE**

For **PREMIUM** entrance doors you can choose between these handle bars



**HANDLE BAR HALF-ROUND**

dimension and type:

- 1480 mm - BA 3013
- 1280 mm - BA 3014
- 1040 mm - BA 3015

**HANDLE BAR ROUND**

dimension and type:

- 1480 mm - BA 3016
- 1200 mm - BA 3017
- 500 mm - BA 3018

## Black MAGIC

Fully on trend:

Accessories in an elegant very intense black. Mysterious, traditional and fascinating. Magical forces captivate your visitors and convey an enchanting, sparkling atmosphere of well-being.

Made with decades of experience.



**HALF SET FOR ATTACHMENT PANEL**

cylinder cover: rosette "ring"  
handle inside: "oval"  
type: BA 3505



**FINGERPRINT**



**ROLLER HINGES**

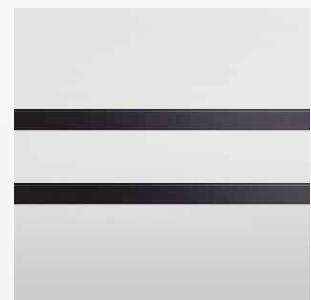
3 per entrance door



**BASE PLATE**



**APPLICATIONS**



**PILASTER STRIPES**

# SPECIAL EQUIPMENT

## ACCESS OPTIONS

All doors are equipped as standard with an automatic lock (without E-opener).

By pulling the door, the latch bolts at the top and bottom of the door automatically move 20 mm into the bolting bar. As a result, the door is always locked - without locking with the key. A day trap (also called snapper or latch) is also integrated in the lock, however, the automatic locking must be deactivated for use.

### 1 E-OPENER

Electric door opener - for using, the automatic lock has to be deactivated manually. The E-opener is integrated in the face plate.

- ✓ Easy opening of the door by actuation of e.g. the domestic intercom system
- ✓ No need to walk to the door

### 2 AUTOMATIC LOCK WITH M-OPENER

Door opener with motor-driven release - By pulling the door closed the multipoint lock will be activated without locking it. Releasing is done by pressing the handle or for instance by a domestic intercom system. Electrical opening options such as fingerprint or domestic intercom system are overridden by manual relocking.

- ✓ Maximum security without locking
- ✓ The automatic and the motorised locking complement each other
- ✓ Ideal for access system in single and multi-family houses

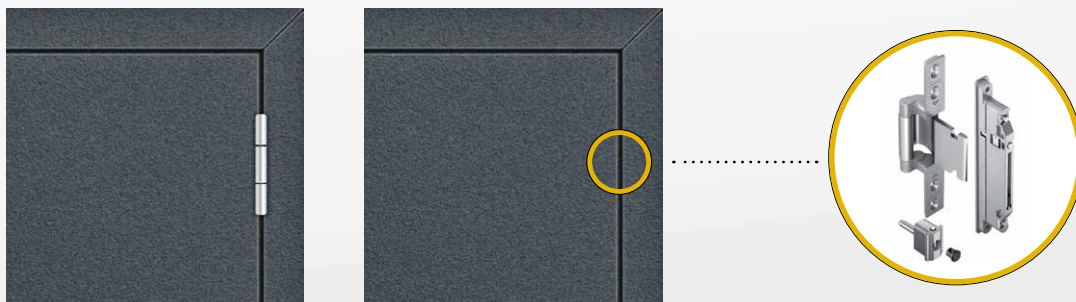
### 3 FULL MOTORIZED LOCK

Opening and closing is motorized - as if by magic. As soon as the door falls into the lock, the lock independently closed, without any manual closing. The opening of the door is comfortably motorized via door opener the intercom system or via access systems.

- ✓ Maximum comfort and security
- ✓ Increased tightness
- ✓ Panic function as standard, opening the door from inside is always guaranteed

## FULLY CONCEALED HINGES

You have the possibility to upgrade all front doors with concealed hinges.



# FINGERPRINT

## KEYLESS ACCESS

Smart access with fingerprint because intelligent building utilisation begins directly at your new entrance door.

While keys, codes or cards can be forgotten, lost or stolen your finger is always with you.

But a fingerprint is even more - it gives the entrance door with new features a smart upgrade!

This creates more comfort and safety in everyday life and for the whole family.



YOUR FINGER  
AS A KEY



HIGHEST  
SECURITY



PUSH-  
NOTIFICATIONS



PERSONALISED  
TIME FRAMES



SMART REMOTE  
OPENING



### 1 FINGERPRINT "STAINLESS STEEL" FOR THE DOOR LEAF FINGERPRINT "BLACK" FOR THE DOOR LEAF

- ✓ 4-segmental luminous ring for visual signalling
- ✓ with provider-app for smart functions
- ✓ single-user management included as standard
- ✓ access system is managed via smartphone or tablet

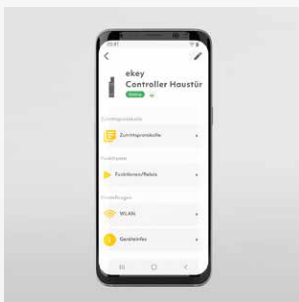


### 2 FINGERPRINT "STAINLESS STEEL" WITH HANDLE BAR FINGERPRINT "BLACK" WITH HANDLE BAR

- ✓ 4-segmental luminous ring for visual signalling
- ✓ with provider-app for smart functions
- ✓ single-user management included as standard
- ✓ access system is managed via smartphone or tablet

"stainless steel" half-round: 1280 mm – BA 3076 or 1480 mm – BA 3077

"black" half-round: 1280 mm – BA 3078 or 1480 mm – BA 3079



### MANAGE FINGERPRINT-SYSTEM WITH THE PROVIDER-APP

The app as a management centre, where you can assign roles and authorisations for family, friends or service providers, among other things.

Push notifications let users know that their loved ones have arrived home safely.

The front door can also be opened remotely. The connection to the Amazon Alexa voice assistant provides additional convenience at the front door - your practical everyday helper!

## SYSTEM REQUIREMENTS

The fingerprint can only be integrated with a **functioning WLAN** and the corresponding ekey binoyx app. The app can be downloaded via the Play Store or App Store. A smartphone or tablet with the following requirements is necessary for installation and commissioning: Android 9 or higher, iPhone or iPad requires iOS 14.0 or higher.



# SASH EXECUTIONS

## INSERT PANEL



DETAIL  
OUTSIDE

- classic view through attachment hinges
- offset between sash frame and panel visible



DETAIL  
INSIDE

Possible with the following models:  
24-105, 24-106, 24-107, 24-108, 24-113, 24-115,  
24-119, 24-120, 24-122, 24-124, 24-125, 24-126

## ATTACHMENT PANEL ONE-SIDED SASH CONCEALED



DETAIL  
OUTSIDE

- modern, high quality look through shapely roller conveyors
- from the outside no unaesthetic offset between sashframe and panel visible
- fingerprint possible
- execution in safety class RC 2 possible



DETAIL  
INSIDE

Possible with the following models:  
24-701, 24-702, 24-703, 24-705,  
24-706, 24-707, 24-709, 24-710

## ATTACHMENT PANEL BOTH-SIDED SASH CONCEALED



DETAIL  
OUTSIDE

- modern, high quality look through shapely roller conveyors
- from the outside no unaesthetic offset between sashframe and panel visible
- fingerprint possible
- execution in safety class RC 2 possible



DETAIL  
INSIDE

Possible with the following models:  
24-201, 24-203, 24-206, 24-208, 24-213, 24-215,  
24-218, 24-220, 24-225, 24-226, 24-228, 24-229



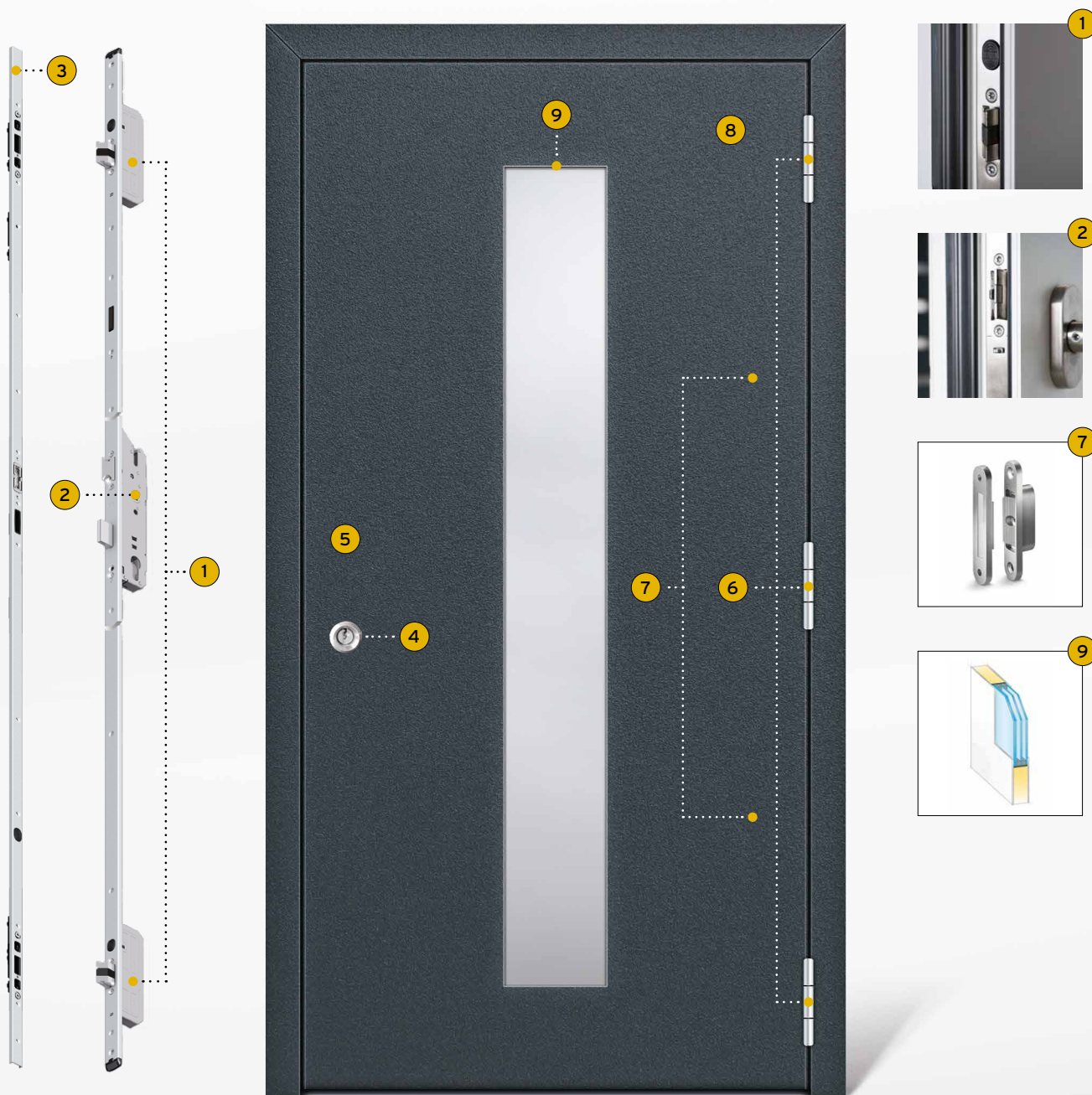
# SAFETY TECHNOLOGY

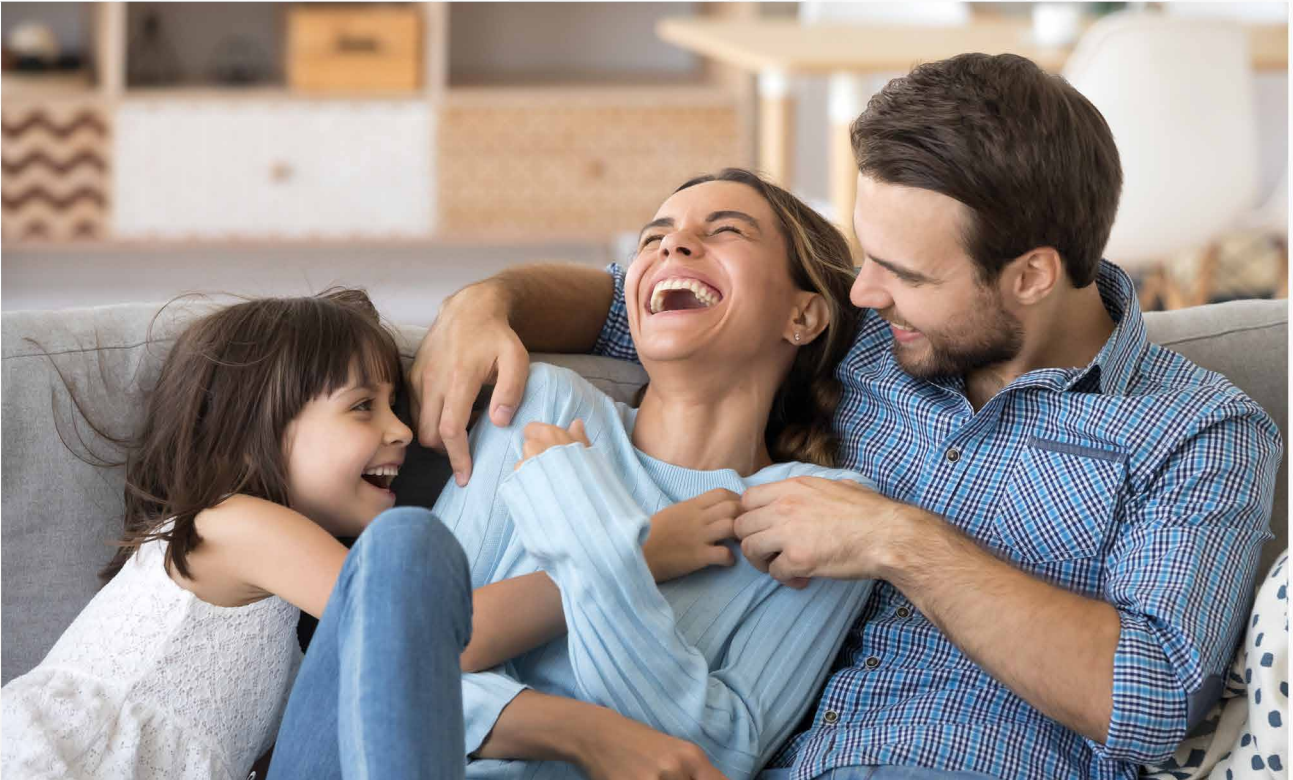
## SECURITY AND SAFETY FOR YOUR HOME

Your new entrance door should be inviting for visitors and deterrent for burglars.

First and foremost, it must guarantee safety because burglars choose this way more and more often.

Even with the basic equipment we therefore attach great importance to the solid safety mechanism.





## SAFETY COMPONENTS

### STANDARD EQUIPMENT

- 1 Lock tested corresponding to security class RC 2:  
When closing the door the latch bolts drive 20 mm into the bolting bar via a magnetic impuls at the top and bottom of the door. Therefore the door is always closed - without re-closing with a key.
- 2 The main bolt can be locked with a key turn - the lever blocks for control purposes, as a child safety lock and for maximum security.
- 3 Continuous bolting bar:  
protection against prying on the lock side
- 4 Cylinder with drill protection
- 5 5 Interior handle in stainless steel with exterior cylinder cover: serves as a pull protection for the cylinder
- 6 Stable roller conveyor:  
triple security on the hinge side
- 7 Two hinge-side securities:  
the opposite wedges get caught when the door is closed and offer additional protection against prying on the hinge side
- 8 Strong and massiv aluminium panel:  
meets RC 2 requirements

### ON REQUEST THE PLUS IN SAFETY

- 9 P4A safety glazing: One pane consists of a composite of two panes with integrated security foil. Furthermore, the glazing is glued circumferential with a special adhesive in the glass cut-out. Thus, the glass connection is secured. | Safety execution RC 2 **against surcharge**

The status **RC 2 TESTED** achieve the following front doors

- ✓ Without glass cut-out through standard equipment:  
HT A 24-201 | HT A 24-203 | HT A 24-213 | HT A 24-215 | HT A 24-220 | HT A 24-225 | HT A 24-226 | HT A 24-229 | HT A 24-707 | HT A 24-709
- ✓ Through the use of an additional P4A protective glazing:  
HT A 24-206 | HT A 24-208 | HT A 24-218 | HT A 24-228 | HT A 24-701 | HT A 24-702 | HT A 24-703 | HT A 24-705 | HT A 24-706 | HT A 24-710

# TECHNICAL DATA

<b>CATEGORY</b>	BASIC and BASIC+ entrance doors
<b>MATERIAL</b>	aluminium
<b>SYSTEM</b>	AT 72
<b>INSERT PANEL</b>	44 mm thick, triple glazing, with warm edge
<b>ATTACHMENT PANEL</b>	48 mm thick, triple glazing, with warm edge where technically possible, an anti-warping shear bond is used
<b>COLOUR</b>	door with panel in RAL 9016 traffic white (more colours for a surcharge)
<b>LOCK</b>	automatic-lock as multipoint locking with daytime function, without E-opener
<b>CYLINDER</b>	profile cylinder with emergency and danger function, drill protection and 5 keys
<b>HINGES</b>	3 concealed hinges 3 3-piece roller conveyors and 2 hinge-side securities (only at 700-er series as standard)
<b>MAX. SIZE</b>	1150 x 2250 mm frame outer dimension
<b>MIN. SIZE</b>	1010 x 2050 mm frame outer dimension
<b>HANDLES</b>	stainless steel handle bar 600 mm outside (HT A 24-113, -122, -124, -125) stainless steel handle bar 1000 mm outside (HT A 24-127, -128, -129, -132) stainless steel handle bar 1600 mm outside (HT A 24-105, -106, -107, -108, -115, -119, -120 & -126) stainless steel handle bar 1600 mm outside (HT A 24-701, -702, -703, -705, -706, -707, -709 & -710)

## U<sub>D</sub>-VALUE INSERT PANEL \*

MODEL	CATEGORY	SYSTEM	U <sub>D</sub> -WERT
HT A 24-105	<b>BASIC+</b>	<b>AT 72</b>	1,1 W/m <sup>2</sup> K
HT A 24-106	<b>BASIC+</b>	<b>AT 72</b>	1,1 W/m <sup>2</sup> K
HT A 24-107	<b>BASIC+</b>	<b>AT 72</b>	1,1 W/m <sup>2</sup> K
HT A 24-108	<b>BASIC+</b>	<b>AT 72</b>	1,1 W/m <sup>2</sup> K
HT A 24-113	<b>BASIC+</b>	<b>AT 72</b>	1,2 W/m <sup>2</sup> K
HT A 24-115	<b>BASIC+</b>	<b>AT 72</b>	1,1 W/m <sup>2</sup> K
HT A 24-119	<b>BASIC+</b>	<b>AT 72</b>	1,0 W/m <sup>2</sup> K
HT A 24-120	<b>BASIC+</b>	<b>AT 72</b>	1,1 W/m <sup>2</sup> K
HT A 24-122	<b>BASIC+</b>	<b>AT 72</b>	1,2 W/m <sup>2</sup> K
HT A 24-124	<b>BASIC+</b>	<b>AT 72</b>	1,1 W/m <sup>2</sup> K
HT A 24-125	<b>BASIC+</b>	<b>AT 72</b>	1,3 W/m <sup>2</sup> K
HT A 24-126	<b>BASIC+</b>	<b>AT 72</b>	1,0 W/m <sup>2</sup> K

## U<sub>D</sub>-VALUE ATTACHMENT PANEL \*

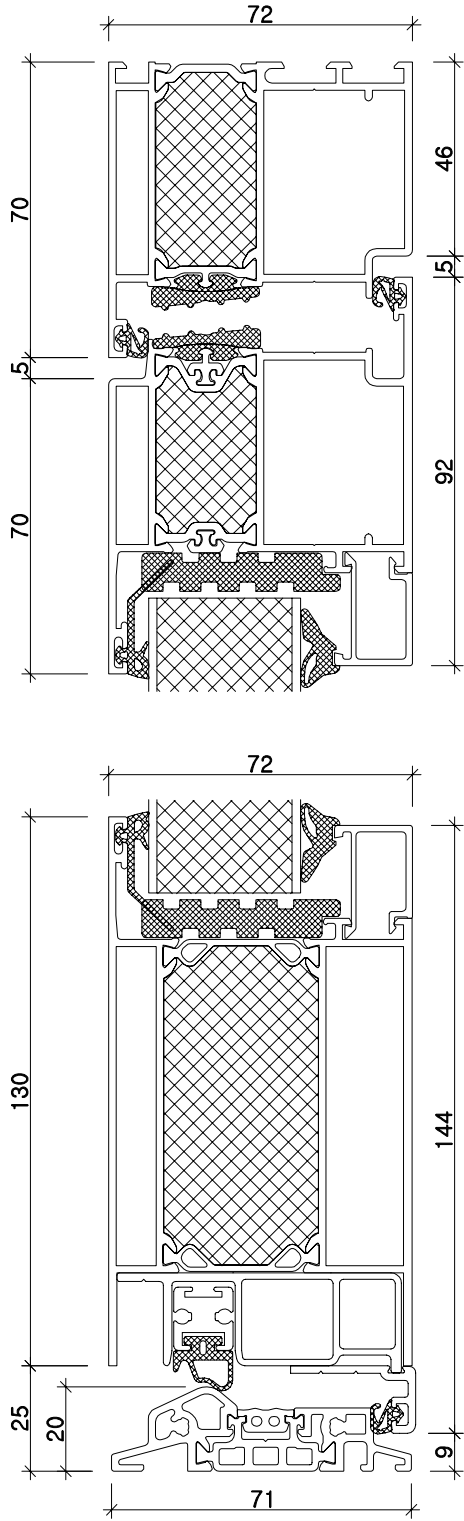
MODEL	CATEGORY	SYSTEM	U <sub>D</sub> -VALUE
HT A 24-701	<b>BASIC+</b>	<b>AT 72</b>	1,1 W/m <sup>2</sup> K
HT A 24-702	<b>BASIC+</b>	<b>AT 72</b>	1,1 W/m <sup>2</sup> K
HT A 24-703	<b>BASIC+</b>	<b>AT 72</b>	1,1 W/m <sup>2</sup> K
HT A 24-705	<b>BASIC+</b>	<b>AT 72</b>	1,1 W/m <sup>2</sup> K
HT A 24-706	<b>BASIC+</b>	<b>AT 72</b>	1,1 W/m <sup>2</sup> K
HT A 24-707	<b>BASIC+</b>	<b>AT 72</b>	1,1 W/m <sup>2</sup> K
HT A 24-709	<b>BASIC+</b>	<b>AT 72</b>	1,1 W/m <sup>2</sup> K
HT A 24-710	<b>BASIC+</b>	<b>AT 72</b>	1,1 W/m <sup>2</sup> K

## U<sub>D</sub>-VALUE CONSTRUCTION DOORS \*

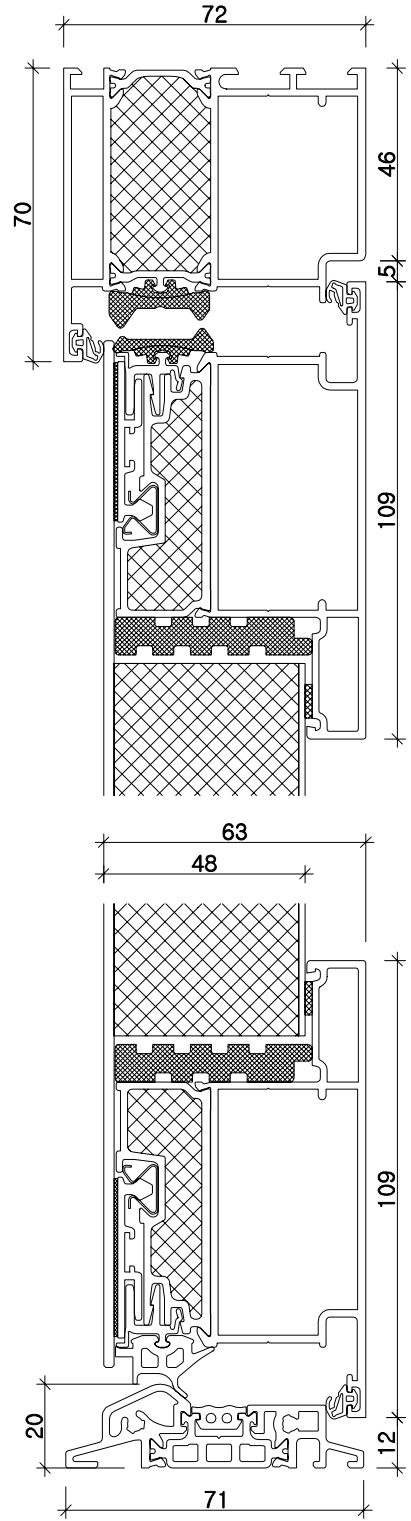
MODEL	CATEGORY	SYSTEM	U <sub>D</sub> -VALUE
HT A 24-127	<b>BASIC</b>	<b>AT 72</b>	1,1 W/m <sup>2</sup> K
HT A 24-128	<b>BASIC</b>	<b>AT 72</b>	1,2 W/m <sup>2</sup> K
HT A 24-129	<b>BASIC</b>	<b>AT 72</b>	1,2 W/m <sup>2</sup> K
HT A 24-132	<b>BASIC</b>	<b>AT 72</b>	1,2 W/m <sup>2</sup> K



INSERT PANEL



ATTACHMENT PANEL



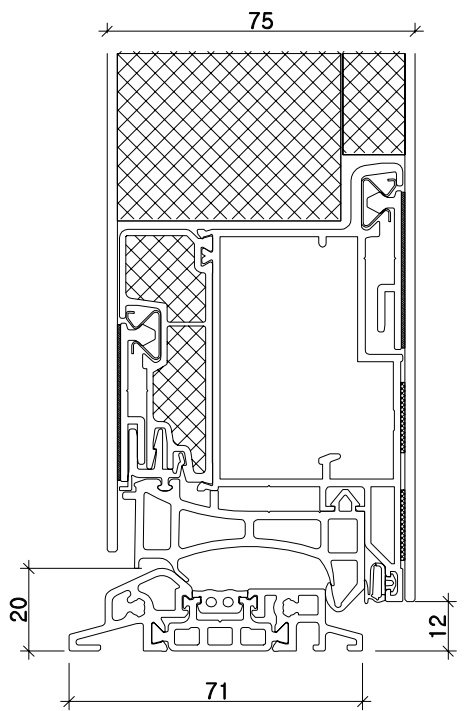
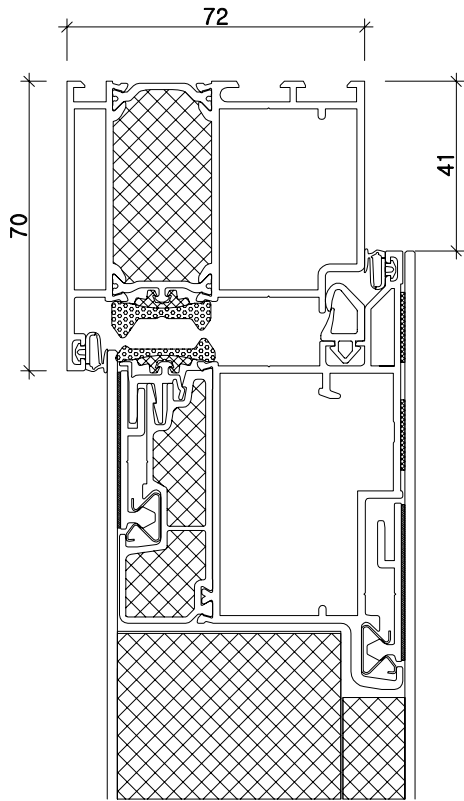
# TECHNICAL DATA

<b>CATEGORY</b>	PREMIUM and PREMIUM+ entrance doors
<b>MATERIAL</b>	aluminium
<b>SYSTEM</b>	AT 72
<b>PANEL</b>	83 mm thick, triple glazing, with warm edge where technically possible, an anti-warping shear bond is used
<b>COLOUR</b>	door with panel in standard colours according to our aluminium colour chart (no wood decors possible) special colours according to RAL possible Both sides same colour or outside colour, inside white
<b>LOCK</b>	automatic-lock as multipoint locking with daytime function, without E-opener
<b>CYLINDER</b>	profile cylinder with emergency and danger function, drill protection and 5 keys
<b>HINGES</b>	3 3-piece roller conveyors and 2 hinge-side securities
<b>MAX. SIZE</b>	1150 x 2250 mm frame outer dimension
<b>MIN. SIZE</b>	980 x 1980 mm frame outer dimension HT A 24-215 min. height 2010 mm
<b>HANDLES</b>	PREMIUM entrance doors: please see category jet black handlebar 1000 mm outside (HT A 24-226) jet black handlebar 1200 mm outside (HT A 24-225)

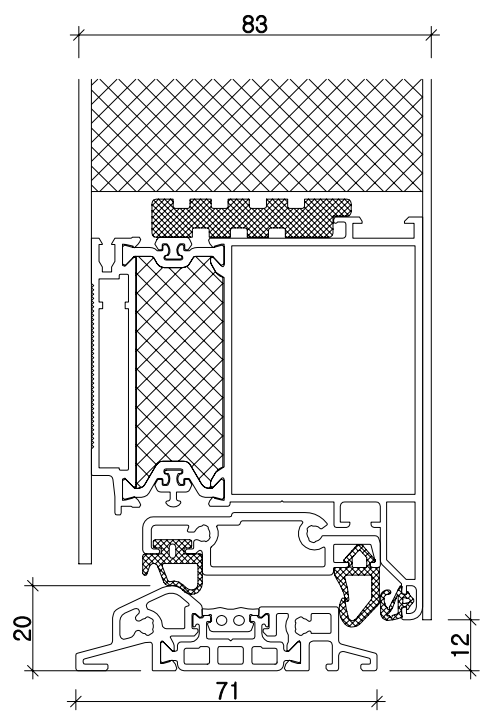
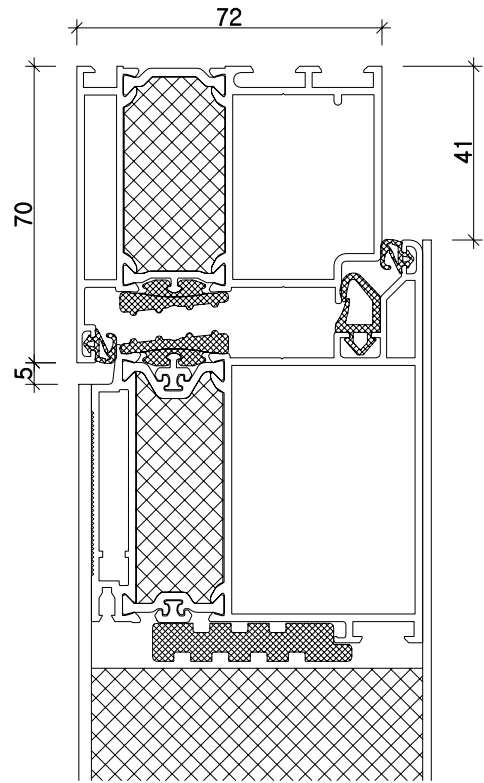
## U<sub>b</sub>-VALUE BOTH-SIDED SASH CONCEALED \*

MODEL	CATEGORY	SYSTEM	U <sub>b</sub> -VALUE
HT A 24-215	PREMIUM+	AT 72	0,90 W/m <sup>2</sup> K
HT A 24-220	PREMIUM+	AT 72	0,75 W/m <sup>2</sup> K
HT A 24-225	PREMIUM+	AT 72	0,85 W/m <sup>2</sup> K
HT A 24-226	PREMIUM+	AT 72	0,85 W/m <sup>2</sup> K
HT A 24-201	PREMIUM	AT 72	0,75 W/m <sup>2</sup> K
HT A 24-203	PREMIUM	AT 72	0,75 W/m <sup>2</sup> K
HT A 24-206	PREMIUM	AT 72	0,82 W/m <sup>2</sup> K
HT A 24-208	PREMIUM	AT 72	0,82 W/m <sup>2</sup> K
HT A 24-213	PREMIUM	AT 72	0,75 W/m <sup>2</sup> K
HT A 24-218	PREMIUM	AT 72	0,82 W/m <sup>2</sup> K
HT A 24-228	PREMIUM	AT 72	0,82 W/m <sup>2</sup> K
HT A 24-229	PREMIUM	AT 72	0,75 W/m <sup>2</sup> K

AT 72



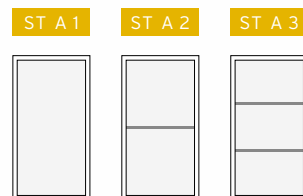
AT 72 MODEL 225 & 226



# ALSO AVAILABLE

## SIDE LIGHTS

ST A 1, ST A 2 and ST A 3 possible (max. width 910 mm)



## GLAZING

VSG 6 mm

## SASH EXECUTION

Execution attachment panel one-sided

Execution totally concealed hinges, only possible for inward opening

## ACCESS OPTIONS

Electric opener

Automatic lock as multipoint locking with M-Opener

Full motorized lock without adaptor

## SECURITY / MISCELLANEOUS

Safety execution RC2 for entrance door

Safety execution RC2 for side lights

Sandblasted glass with clear edge or clear stripes (entrance door and/or side light) per door or side light

## COLOURS

pg 1-2 for entrance door

included in the basic price

pg 1-2 for side lights

pg 3-5 for entrance door and side lights

## NOTE

There might be slight deviations in colour due to printing process.



# **KNEER · SÜD** **FENSTER**

---

Lived Vision



## **KNEER GmbH** Fenster und Türen

Horst-Kneer-Straße 1  
D-72589 Westerheim  
phone: +49 (0) 7333 / 83-0  
e-Mail: info@kneer.de

## **SÜD-FENSTERWERK** GmbH & Co. Betriebs-KG

Rothenburger Straße 39  
D-91625 Schnelldorf  
phone: +49 (0) 7950 / 81-0  
e-Mail: info@suedfenster.de

## **SÜD-BAUELEMENTE GmbH**

Ludwig-Erhard-Straße 4  
D-03238 Massen  
phone: +49 (0) 3531 / 799-114  
e-Mail: info@suedfenster.de



**[WWW.KNEER-SUEDFENSTER.DE](http://WWW.KNEER-SUEDFENSTER.DE)**

Your KNEER-SÜDFENSTER specialized dealer: